

# Evolution of storage management: Transforming raw data into information

*Exponential growth in storage requirements and an increasing number of heterogeneous devices and application policies are making enterprise storage management a nightmare for administrators. Back-of-the-envelope calculations, rules of thumb, and manual correlation of individual device data are too error prone for the day-to-day administrative tasks of resource provisioning, problem determination, performance management, and impact analysis. Storage management tools have evolved over the past several years from standardizing the data reported by storage subsystems to providing intelligent planners. In this paper, we describe that evolution in the context of the IBM TotalStorage® Productivity Center (TPC)—a suite of tools to assist administrators in the day-to-day tasks of monitoring, configuring, provisioning, managing change, analyzing configuration, managing performance, and determining problems. We describe our ongoing research to develop ways to simplify and automate these tasks by applying advanced analytics on the performance statistics and raw configuration and event data collected by TPC using the popular Storage Management Initiative-Specification (SMI-S). In addition, we provide details of SMART (storage management analytics and reasoning technology) as a library that provides a collection of data-aggregation functions and optimization algorithms.*

S. Gopisetty  
S. Agarwala  
E. Butler  
D. Jadav  
S. Jaquet  
M. Korupolu  
R. Routray  
P. Sarkar  
A. Singh  
M. Sivan-Zimet  
C.-H. Tan  
S. Uttamchandani  
D. Merbach  
S. Padbidri  
A. Dieberger  
E. M. Haber  
E. Kandogan  
C. A. Kieliszewski  
D. Agrawal  
M. Devarakonda  
K.-W. Lee  
K. Magoutis  
D. C. Verma  
N. G. Vogl

## Introduction

Managing storage systems within an enterprise has always been a complex task requiring skilled administrators to ensure zero downtime and high performance for business-critical applications. Over the years, the management of storage area networks (SANs) has become increasingly complex with petabyte-scale enterprises, complex application requirements, and heterogeneous hardware and protocols. Increased sensitivity to the operational costs of information technology is driving the efforts to optimally use resources; *just-in-time* provisioning is replacing *just-in-case* over-provisioning. To cope with the complexity, administrators create diagrams of SAN device connectivity, which provide only an out-of-date point in time end-to-end view; they manage individual devices—hosts, fabric switches, and storage controllers—that use proprietary interfaces provided by individual vendors. Each interface is different and reports data in

nonstandard formats. The administrators have developed simple programs and collections of scripts to manage these devices. In order to deal with the complexity and because of the steep learning curve, administrators have begun to specialize in specific areas based on function or category. As a result of these conditions, administrators of enterprise SANs no longer manage their SAN as a whole; instead, they manage individual devices and use manual correlation, specialization, and various forms of bookkeeping to keep track of the parts.

In response, storage management tools have evolved to assist administrators in managing increasingly complex SANs. Several storage vendors, including IBM, have recognized and responded to the need to simplify the discovery, monitoring, and reporting of storage subsystems and storage networks. Although devices such as storage controllers and switches from various vendors differ slightly in functionality, each device requires a specific application programming interface (API) to

©Copyright 2008 by International Business Machines Corporation. Copying in printed form for private use is permitted without payment of royalty provided that (1) each reproduction is done without alteration and (2) the *Journal* reference and IBM copyright notice are included on the first page. The title and abstract, but no other portions, of this paper may be copied by any means or distributed royalty free without further permission by computer-based and other information-service systems. Permission to *republish* any other portion of this paper must be obtained from the Editor.

0018-8646/08/\$5.00 © 2008 IBM

retrieve configuration and performance information. Thus, gathering performance data is done either by means of vendor-provided APIs or via standard interfaces, such as CIM (Common Information Model) [1], SNMP (Simple Network Management Protocol) [2], or SMI-S (Storage Management Initiative-Specification) [3]. When communicating with devices using these standard interfaces, connection is made either directly to the device or indirectly through a secondary facilitator, called a *device agent*, for example, a proxy CIM object manager [4]. In addition to performance data and device configuration, component failure and other events are usually collected from devices using these same interfaces.

Collecting events and recording data from multiple vendor devices was the starting point for tools such as the IBM TotalStorage\* Productivity Center (TPC) [5], the EMC ControlCenter\*\* [6], and the HP Systems Insight Manager\*\* [7]. These tools are generically referred to as *storage resource managers* (SRMs). After retrieving data from the device or device agents and computing deltas for the device performance counters, SRMs place persistent data in a database. From a single console, SRM applications provide administrators with the ability to monitor multiple devices, analyze device performance thresholds, and track usage.

This is a significant step forward but falls short of what administrators really need. For example, they need the ability to configure devices and provision storage using a common interface across multiple devices from different manufacturers. SRM applications, however, use proprietary API and CIM interfaces to perform configuration changes and to provision tasks on the SAN switches and storage subsystems. As a result, although SRM device management interfaces are now used to verify settings, rarely can an administrator use them to perform device-specific changes. Thus, while these generalized interfaces are powerful, they provide only the capability to perform the most common tasks.

Aggregating end-to-end system data enables an administrator to drastically improve the understanding of how various devices within the data center are allocated and to assess their current and historical utilization values, but administrators still need additional help with the decision-making required to perform administrative tasks, especially in large environments. Consider a typical data center scenario of a large SAN that consists of more than 2 TB of storage from ten heterogeneous storage controllers supplied by one or more vendors. On the host side, there are more than 1,600 servers connected via four Fibre Channel fabrics with multiple SAN switches. In such an environment, administrators are typically responsible for provisioning servers and storage when new applications are added or the demand for an existing application increases. Provisioning the storage and

adjusting the SAN zoning to create multiple paths to each newly provisioned volume can take several days to a week when done manually. The administrator needs to identify which storage subsystems have available storage and which of the newly provisioned servers are able to meet the performance requirements and can access that storage by means of at least two fabrics (to reduce the likelihood of a single point of failure). Once the storage controllers are identified, volumes are created (using the storage controller management tool) and zoning is performed (using the switch fabric management tool). After performing several steps with different tools, the final configuration may not be ideal and may cause unintended problems with other systems attached to the SAN. Thus, there is a need for higher-level tools that assist the administrator with tasks such as provisioning in order to prevent unintended side effects and to allow changes to be made in hours instead of days.

Data center environments are constantly evolving. After the initial plan deployment, administrators are typically required to continuously monitor application performance to ensure that it is not degrading. Solving a performance degradation problem is nontrivial in large environments and can take several hours of investigation to pinpoint a saturated server, switch, storage subsystem, or Fibre Channel port. After pinpointing the saturated device, the administrator has to then investigate the cause of saturation. For example, a Fibre Channel port at the storage controller can become saturated as a result of re-zoning such that most of the storage traffic from the fabric to the controller flows through a single port instead of being load-balanced across the multiple storage-controller ports. This underscores the need administrators have for validating configuration changes so they can prevent misconfiguration problems from occurring. Further, there is a need to track changes in the configuration over an extended period of time such that a configuration snapshot for different time periods is available. Finally, when the problem does occur, administrators need help short-listing the devices and configuration changes for deeper analysis.

Advanced analytic tools in SRMs can assist in change management, configuration analysis, provisioning, performance management, problem determination, resiliency planning, root-cause analysis, and impact analysis. These tools use the raw data aggregated by the SRM and analyze it to generate insights and configuration options for such tasks as provisioning and problem resolution. In this paper, we describe such tools in the context of the IBM TPC. These tools help with four key administrative performance-management tasks: change management, configuration analysis, provisioning and capacity planning, and performance management and problem determination, each discussed in the

subsequent sections. To further enhance the ability of these modules to extract information from the raw data, we are developing SMART (storage management analytics and reasoning technology) [8], a library of data-aggregation functions for device modeling. SMART uses regression functions, workload trending using time-series analysis, end-to-end dependency functions, and data-clustering techniques to detect abnormalities in workload and device characteristics. For more detailed information about SMART and its functions, please refer to our related papers [9–13].

### Change management

Administrators often update the system configuration, for example, create and delete storage volumes, configure zones within the Fibre Channel switches, change the logical unit number masking of hosts and storage volumes, and add new devices, hosts, and switches.

Configuration changes do not always take into account potential second-order effects on other applications that share the same SAN. For example, re-zoning a switch may cause traffic to be redirected to other switches, which can create a potential bottleneck for other applications. Also, it is well documented that a high percentage of storage downtime is caused by incorrect configuration changes [14, 15]. Traditionally, administrators maintained change logs that were manually updated with the details of the configuration changes. These logs are used for problem diagnosis, often at a much later point in time and by a person other than the one who made the change. In enterprise environments in which tens of daily configuration changes can be affected by multiple administrators, there is a need for a systems management tool with the ability to track configuration history at a fine granularity so that an administrator can accurately reconstruct the precise state of the infrastructure at a given point in time and use this information for problem determination, change management, or auditing purposes. The *change rover* component in TPC is designed to satisfy this requirement.

The change rover provides temporal browsing capability by making old data versions nameable and accessible, thus allowing the user to reconstruct configuration changes over a specified duration of time. Administrators have two mechanisms for generating the configuration history: on-demand and scheduled. With the on-demand method, an administrator can take an asynchronous snapshot of the system configuration at will. Additionally, each snapshot can be associated with an optional text tag. This tag can facilitate subsequent collaborative debugging by a team of administrators and it provides a means for auditing configuration change actions. The scheduled method of generating a configuration history lets users specify how frequently

snapshots of the system configuration are taken. The history generation scheduler wakes up at the assigned time and does its work unobtrusively in the background without requiring intervention. This method automates the cumbersome task of collecting periodic snapshots of the system configuration state. However, any product that stores historical data results in increased consumption of storage space. Thus, the change rover uses innovative technology to populate the database repository that records only the configuration deltas (as opposed to global snapshots) to minimize storage space consumption for history data. As in a log-structured file system, there is still the overhead created by the need to replay the history to reconstruct the configuration at some point in time; however, this runtime overhead is minimized by intelligent use of database views and indexes, and the savings in database space and overhead compensate for the residual performance overhead.

Semantically, the change rover shows changes to devices, device attributes, device interconnections, and zoning configurations. Fundamentally, there are four types of change operations that are of interest with respect to the configuration of an entity: addition (e.g., provisioning a new volume on a storage subsystem), modification (e.g., increasing the capacity of a given volume), deletion (e.g., deleting a storage volume), and no change.

A typical usage scenario for the change rover follows. In a large distributed system configuration, changes happen quite frequently. A change that negatively impacts performance may not be noticed for weeks. At the point when the administrator tries to solve the problem, it is typically very difficult to determine which of the many configuration changes could have caused the problem. Using the change rover, the administrator can go back and compare the system state from the time before trouble reports started coming in and compare it with later states of the system. The time slot under consideration can be further refined until the problem is identified and fixed. The synchronized graphical and tabular views generated by the change rover, along with drill down (moving from a summary view to more detailed data), make it possible for the administrator to view and compare the configuration at discrete points in time and thus rapidly determine which configuration change was the culprit.

In summary, the change rover provides a scalable and easy-to-use way to visualize storage configuration at a specific point in time and to compare configurations at specific points in time for rapid problem determination.

### Configuration analysis

Adherence to best practices is essential for successful configuration and deployment of complex systems. While

deploying a system in a data center, experts rely on experience and best-practice guidelines to proactively prevent configuration problems from occurring. According to the IBM SAN Central team—an internal group in IBM that deals with installation, configuration, and troubleshooting of SANs for customers and gathers and maintains a large knowledge base of customer problems, solutions, and best practices—80% of configuration problems are caused by the violation of best practices. Generating a best-practices user’s manual is costly, requiring many man-years of data gathering and analysis. It is difficult for system administrators to maintain their own dynamic set of best practices because the technology is continuously evolving and interoperability standards are still immature and lead to hard-to-diagnose configuration problems.

The configuration analysis functionality in TPC is a better approach. It is an extensible, policy-based analytic framework to validate storage infrastructures against best-practice violations in an end-to-end fashion. Best-practice policies are encoded in a declarative policy language and cover a wide range of domains, such as fabric security, fabric configuration, storage and server security, and configuration. The functionality is extensible and allows the addition of policies for such areas as server management and IP (Internet Protocol) network fabric management. These policies are grouped into the following categories:

1. *Parametric*—Accepts input parameters from the administrator as thresholds.
2. *Nonparametric*—Does not require input parameters from the administrator.

The following is an example of a parametric policy.

- *Policy*—Each fabric may have a maximum of  $n$  number of zones. (In this policy, the administrator can supply the value of  $n$  on the basis of the type of fabric that imposes the zone number constraint.)
- *Explanation*—The configuration analysis function checks whether the number of zone definitions in the fabric is larger than the number that was entered by the administrator. In large fabrics, too large a number of zone definitions can become a problem. Fabric zone definitions are controlled by one of the switches in that fabric, and limiting their number ensures that the zoning tables for the switch do not run out of space. The zone-set scope is not supported by this policy.

4 The following is an example of a nonparametric policy.

- *Policy*—Each host bus adapter (HBA) accesses storage subsystem ports or tape ports, but not both.
- *Explanation*—The configuration analysis function determines whether an HBA accesses both storage subsystem and tape ports. Because HBA buffer management is configured differently for storage subsystems and tape, it is not desirable to use the same HBA for both disk and tape traffic. A policy violation is generated if a zone set allows an HBA port to access both disk and tape. The fabric and zone-set scopes are not supported by this policy because an HBA can be connected to multiple fabrics.

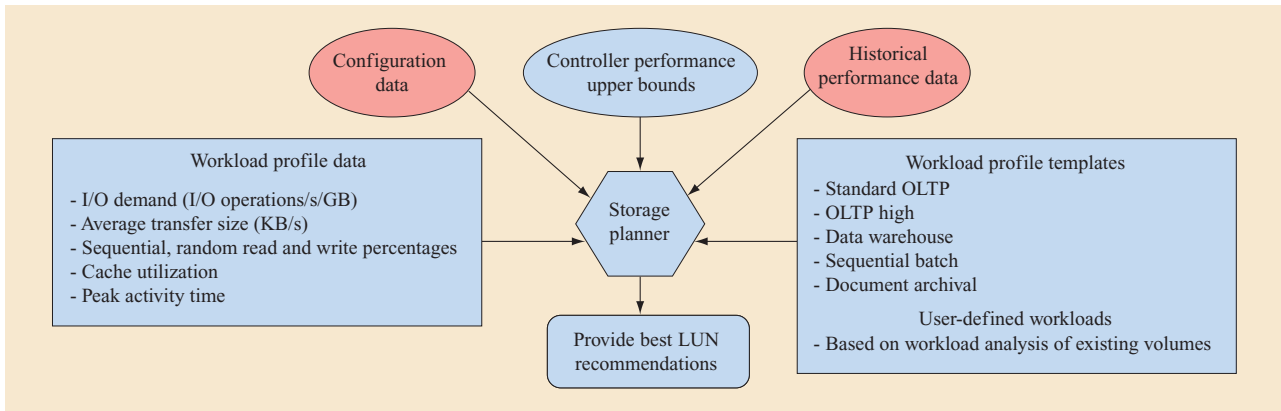
The configuration analysis tool can be configured to have different scopes that can range from the entire environment to a single Fibre Channel fabric or a set of Fibre Channel zone sets. These scopes can be selected on the basis of the policies to be verified. Administrators can decide to run a group of policies on a particular scope, which is called a *profile*. Primitives such as scope and profile help administrators customize their configuration analysis environment.

Generally, configuration changes are scheduled periodically or are synchronized with important event occurrences in a managed storage environment. Tasks such as storage provisioning and access control are tested offline before being put into production. Administrators can synchronize their configuration changes using configuration analysis to determine whether any best practice will be violated because of these changes. They can incrementally fix the violations and run configuration analysis. A more detailed discussion of currently supported policies is available in the TPC version 3.3 update guide [16]. In our ongoing research, we are applying machine-learning techniques to generate the list of best practices from large collections of customer problem logs [17].

## Provisioning and capacity planning

One of the most challenging and time-consuming tasks in enterprise data centers is application provisioning. Introducing a new application (or even changing the characteristics of an existing application) often takes weeks. This is due primarily to the complexity involved in capacity planning (identifying appropriate resources that can be allocated to the application) and executing the plan to provision the actual resources for the application.

Capacity planning has long been done manually by using rules of thumb and back-of-the-envelope calculations. Beginning with the basic capacity requirement, an administrator decides how many storage volumes to create, what their individual sizes should be, and whether enough space is available in the subsystems to accommodate the new volumes. With an understanding



**Figure 1**

Storage configuration and planning operation. (LUN: logical unit number; OLTP: online transaction processing.)

of the nature of the new workload (e.g., the read/write ratio and the random/sequential ratio), the administrator can try to choose where to place the new volumes so that the application performance objectives can be met without adversely impacting any preexisting workloads. As shown in **Figure 1**, there are several parameters to take into account. It requires not only familiarity with the complex internal structure of all available subsystems and access to the resource utilization and performance data for the subsystem components, but also the ability to analyze and match them appropriately.

The SAN storage-provisioning planner functionality in TPC is designed to assist administrators in this process. It uses live monitored performance data for each of the internal subsystem components (device adapters, ranks, and storage pools) and performs a detailed analysis on the basis of subsystem models and performance upper bounds to select appropriate subsystems. This analysis and selection is a complex optimization task, as it involves bin-packing algorithms and must deal with the hierarchical constraints imposed by the internal structure of the subsystems. Once the administrator selects a plan to deploy, the volumes are created on the chosen subsystems and a suitable number of paths from the hosts to these volumes are set up, as are zoning configurations as well [18].

The current TPC provisioning planner focuses primarily on optimizing storage subsystem utilization by careful placement. With new virtualization technologies providing greater server isolation and mobility, more attention is now being paid to ensuring the appropriate utilization of server resources in conjunction with the storage and I/O (input/output) fabric. Our ongoing work extends the TPC planner to include integrated server and storage placement using a new technique called *SPARK*

(stable proposals and resource knapsacks) [19]. Using a novel combination of the stable marriage and 0/1 knapsack solutions, *SPARK* provides the first such mechanism to decide placement for both computation and data in a coupled manner. (Computation could be placed, for instance, on a virtual machine.) This ensures that applications requiring higher I/O rates are placed on appropriate server-storage combinations.

A second stream of ongoing work is to reduce or eliminate dependence on white-box models (only internals can be viewed) for storage devices used in optimizations. White-box models are less generic and limited to the scope of only a few subsystems. SMART is a library of black-box models (inputs and outputs can be viewed) under development that is being designed to learn models of subsystems based solely on their observed performance data. Applicable machine-learning algorithms for device models include regression methods, such as multivariate linear regression and multivariate adaptive regression splines [20], and decision-tree methods, such as classification and regression tree (CaRT) [21] and M5 [22]. Both CaRT and M5 are included in SMART.

Time-series models in SMART characterize a workload on the basis of its historical behavior. The model is used for predicting future behavior and for analyzing pattern, periodicity, abnormality, and trend of a data series. It helps the administrator make better decisions in capacity planning. There are two main categories of time-series analyses: time domain and frequency domain. Analysis in the time domain is most often used to determine trends and make predictions. We use the popular autoregressive integrated moving average (ARIMA) method [23] for time-domain analysis. ARIMA models require that the order of the components be determined—a challenging task when it has to be done

manually. Through an extensive series of experiments, we have developed best-practice values that allow us to determine this order. We use fast Fourier transforms [24] for frequency-domain analysis. Fourier transform gives *periodograms* in which a periodic data series shows spikes at its cycle, while a nonperiodic series is typically flat with little variation.

### Performance management and problem determination

Storage administrators are responsible for ensuring that enterprise applications maintain a certain level of I/O performance (in terms of average I/O throughput and response time). This task involves a detailed understanding of the end-to-end server-storage path consisting of server connectivity to Fibre Channel switches, the connectivity of switches to other switches and storage controllers, and the logical configuration of storage pools and volumes within the storage controllers. A typical enterprise-scale storage environment consists of thousands of hosts, hundreds of Fibre Channel switches with 8 to 64 ports each connecting tens of enterprise-class storage controllers, tape libraries, and other devices. The order of the number of end-to-end paths from host servers to storage volumes can range upward from thousands to millions. Manually correlating data collected from individual devices within the infrastructure is no longer a feasible alternative.

Performance management starts with appropriately provisioning storage capacity and bandwidth on the basis of application requirements. In addition, path and zone planning is required to ensure that there is sufficient bandwidth for connectivity between the application server or servers and the storage subsystem. After the initial setup, administrators continuously monitor and analyze the end-to-end path to ensure that the performance requirements are satisfied. Performance violations can occur for several reasons with varying levels of complexity. Violations can be caused by simple device failures that are easy to detect or by relatively complex device saturation caused by skew in the workload of one or more applications sharing the device. Thus, problem determination is an important aspect of performance management and requires that administrators drill down until they uncover the reason for a performance violation.

There are several performance-management and problem-determination tools with varying levels of automation available in TPC. As described earlier, the configuration analyzer continuously analyzes configuration changes and checks for violations of best practices as a method intended to prevent performance problems before they occur. Similarly, the change rover maintains historical configuration information, making it

possible for an administrator to review configuration changes that could possibly have led to a performance violation.

An important aspect of performance management and problem determination is to provide end-to-end information to the administrator using an intuitive, flexible interface that allows administrators to understand the overall environment and enables them to drill down into the details of logical or physical entities to diagnose system problems. The TPC datapath explorer is such an interface. It uses advanced human-computer interaction (HCI) concepts [25]. Its design objectives were derived from numerous real-world case studies conducted to understand how administrators execute their day-to-day tasks and make use of available data for decision making. The explorer provides a view of the end-to-end path dependencies between servers and storage subsystems or between storage subsystems (e.g., from a SAN volume controller to back-end storage). In addition to discovering path dependencies, the explorer also derives the end-to-end performance and health information, that is, information that consists of critical and other configuration alerts related to the devices (typically found in the device logs). In order to provide an intuitive view, the overall datapath (**Figure 2**) is divided into three groups: host, fabric, and subsystem.

Some of the key HCI concepts the explorer uses to radically simplify tasks such as system diagnosis to trace the source of a problem from a host to a switch to a storage subsystem [26–28] are as follows:

- *Semantic zooming and progressive disclosure*—A visualization technique for rendering very-high-density data by adaptively changing the level of data abstraction. While graphical zooming changes the scale of the object being viewed, semantic zooming changes the level of information abstraction, for example, zooming out would mean going to a higher level of abstraction. It is often employed in conjunction with progressive disclosure, which provides task-specific presentation and interaction in a sequence of displays. Much of this capability was achieved by anticipating the steps administrators would take in completing tasks and then creating displays to support the completion of those tasks quickly.
- *Multilevel, multiperspective layouts*—Explorer is capable of providing multiple views of the system topology (server, fabric, and storage centric) with varying levels of abstraction (overview, group, single devices). Initially, users are shown an overview of their entire systems environment in which devices are grouped by type. In the event of a problem, users can

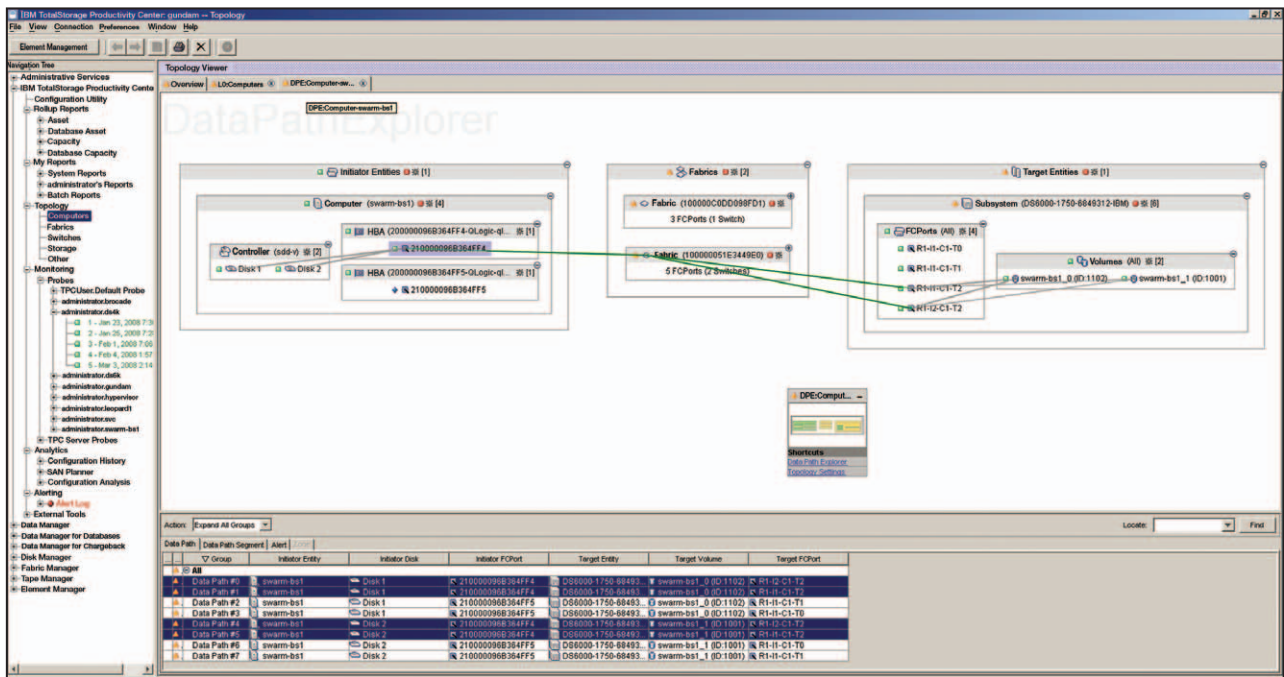


Figure 2

End-to-end entity correlation using topology viewer.

view aggregated status to trace information to troubled devices by drilling further down into the environment, for example, beginning with fabric groups and then moving downward eventually to a switch in a fabric. The administrator can quickly recall a specific view without having to back in to or out of panel hierarchies or lose context.

- Grouping and aggregation**—The explorer organizes devices into a number of task-dependent groups that can be custom defined. Users can focus not only on a smaller number of devices but also on devices that are relevant to the task at hand. For example, an administrator can first regroup hosts by status and then identify critical entities; they can then regroup again by operating system or by a user-defined location property to gain a different perspective on the problem. Individual groups can be collapsed or expanded in place. Collapsed groups show a summary of their contents that enables users to survey the contents and see important device information, such as degraded status, even at higher levels. Aggregation of device information helps in monitoring a large number of entities, even when monitoring at higher levels, and helps guide administrators to the root cause of a problem at lower levels.

- Overlays**—The viewer provides overlays to add task-specific information such as health status, performance status, or zone memberships. Overlay status information is aggregated for groups up the hierarchy of devices.

As an example, if a host is running slowly, the system administrator can use explorer to ascertain the health of the associated I/O path and determine whether a component has failed or a link is congested. The explorer highlights the performance problems that might be causing the slow application response. As another example, a system administrator may want to determine whether the I/O paths for two applications (on separate host logical unit numbers) are in conflict with each other (e.g., because they share a common switch). After viewing the I/O paths for these two applications, the administrator can make the required zoning or connectivity change to alleviate the problem.

Our ongoing research is focused on two aspects of problem determination: abnormality detection and path correlation. *Abnormality detection* analyzes the monitored data to identify similarity clusters and isolate abnormal samples in multidimensional performance data. It is designed to answer questions such as What are the typical workload characteristics? and Is the input abnormal? If an abnormality is detected, it triggers an alert for the

administrator and records a detailed snapshot of the system configuration for later analysis. *Path correlation* refers to the task of determining the mapping of each application workload to the different paths and links in the system. It is used to answer questions such as Which applications are going through this link, port, or device? and What are the application paths? Path correlation functions are the basis for dependency discovery, problem determination, and impact analysis. The literature shows that there has been significant interest in using correlation models for problem diagnosis and root-cause analysis [26–30]. These models capture the relationships among different components in the system by analyzing request traces collected by node instrumentation or request probing. These path correlation models capture the relationships among different components in the system by analyzing request traces collected by node instrumentation or request probing.

To provide support for abnormality detection, we are implementing a data-clustering module as part of the SMART library. Data clustering is done using machine-learning algorithms, namely *k*-means [31] and expectation maximization [32]. The basic idea is that normal monitoring samples will have similar values and will always be clustered together (e.g., the response time of a device for a given load will be similar in normal circumstances); the abnormal samples will be far away from their corresponding clusters and hence can be detected and notification provided. The distance measurement for abnormality considers the weighted Euclidean distance between the sample and its cluster centroid. We use weighted distance because different metrics have different statistics, for example, a cache hit is between 0% and 100%, while the I/O rate ranges into the thousands. Metric weights are obtained from in-house experiments and preloaded in the SMART library.

The path correlation module in SMART uses the topology and fabric zoning information available in TPC. The application-to-server mappings and those to the server port, controller port, controller, and disk array are extracted from the TPC. Routing information within the fabric network is managed automatically by fabric switches and, thus, is not available. Fortunately, fabric networks typically use uniform configurations with simple topology designs, which makes it easy to infer routing paths. High redundancy in enterprise storage systems is a challenge for path correlation. In a typical real-world setup, one server has at least two unshared fabric networks connecting to the storage controller, and each path uses two to four redundant connections at each device for load-balancing and failover. Existing dependency models are not applicable since we cannot currently instrument storage controllers or send probing

requests. A complete study of load-balancing and failover behavior remains for future work.

### Related work

Data storage needs have been rapidly increasing, creating the need for more automated storage management. There has been a significant amount of research in the area of storage resource manager (SRM) tools that can be differentiated along five axes: discovery and monitoring of heterogeneous storage hardware and resources, analyzing and reporting normal and anomalous behavior, configuration and capacity planning, change execution, and ease of use. The key SRM tools available today include CA Storage Resource Manager [33], EMC ControlCenter [6], HP Storage Essentials [34], IBM TPC [5], Symantec storage management solutions [35], and Network Appliance NetApp Storage Suite [36]. In addition to these, there are other smaller companies (such as Akorri, Brocade Communications Systems, and Tek-Tools) in the market that focus on individual aspects of storage management. A brief comparative study of these commercial tools is available from Russell and Passmore [37] in their “magic quadrant” analysis, which compares major SRM software against different criteria. In our view, the key aspect that distinguishes the IBM TPC solution from the others is an easy-to-use unified console that integrates all the SRM functions and provides a seamless way for the administrator to discover, monitor, analyze, plan, and execute by making use of the advanced analytics described in this paper.

Visualizing high-density data is an area of active research in the HCI domain [25, 38]. Topology viewer uses some of the HCI concepts such as semantic zooming and progressive disclosure to change the level of data abstraction adaptively. The change rover is related to software versioning tools that keep track of different software modifications and allow users to compare their changes with earlier versions of their code. The change rover applies similar concepts in the SAN environment so that system administrators can keep track of changes in the configuration of devices, zones, and interconnects. The configuration analyzer enables the use of Technology Infrastructure Library (ITIL\*\*) [39] best practices for the management of storage infrastructures and services.

Provisioning and capacity planning have been well studied [40]. There are many commercially available tools (e.g., EMC ControlCenter SAN Manager [6] and CA SAN Designer [41]) and research prototypes (such as Minerva [42], Ergastulum [43], and HP Appia [44]) that perform capacity planning for shared storage systems. One of the major factors that differentiate TPC from these products is that it can plan volume allocation, port selection, or zoning on the basis of runtime performance and subsystem internal component utilization, which may

become necessary once the infrastructure has been deployed. Previous algorithms [45] for disk layouts and file placements have been proposed, but the difficulty is taking into account the hierarchical and other practical constraints that are common in modern SAN environments.

### Conclusion and future work

In the last few years, there has been a significant evolution in the domain of storage management. Starting with the manual collection of data from individual device management graphical user interfaces, storage management is evolving to an approach that standardizes the collection of data for multivendor devices followed by persistence in a common repository and provides end-to-end topology information integrated with analytic tools to assist administrators with day-to-day administrative tasks. In this paper, we presented a description of various analytic features of the IBM TPC in the context of existing techniques used by administrators and described how TPC tools can simplify the day-to-day tasks of change management, configuration analysis, provisioning and capacity planning, performance management, and problem determination.

Our ongoing research is focused on further automation and simplification of the error-prone tasks of disaster recovery planning, charge back [46], end-to-end provisioning optimization [19], storage service outsourcing [47], and others that are currently executed using back-of-the-envelope calculations. Management decisions are becoming more proactive rather than being reactive. Administrators are increasingly using what-if analyzers [48] to evaluate the impact of configuration changes and system events. Our grand vision is a tighter integration of storage management with server, virtual machine, and IP network management, providing an end-to-end application-level management environment with dynamic continuous optimization.

\*Trademark, service mark, or registered trademark of International Business Machines Corporation in the United States, other countries, or both.

\*\*Trademark, service mark, or registered trademark of EMC Corporation, Hewlett-Packard Development Company, L.P., Office of Government Commerce, or Sun Microsystems, Inc., in the United States, other countries, or both.

### References

1. Distributed Management Task Force, Inc., Common Information Model (CIM) Standards; see <http://www.dmtf.org/standards/cim/>.
2. J. Case, M. Fedor, M. Schoffstall, and J. Davin, "A Simple Network Management Protocol (SNMP)," IETF Request for Comments 1098, Network Working Group (May 1990); see <http://www.ietf.org/rfc/rfc1157.txt>.

3. Storage Networking Industry Association, SMI-S: The Storage Management Initiative Specification; see [http://www.snia.org/forums/smi/tech\\_programs/smis\\_home/](http://www.snia.org/forums/smi/tech_programs/smis_home/).
4. The Open Group, SNIA Open Source Java CIM Object Managers (CIMOMs); see <http://www.opengroup.org/snia-cimom/>.
5. IBM Corporation, IBM TotalStorage Productivity Center Suite; see <http://www-304.ibm.com/jct03004c/systems/storage/software/center/>.
6. EMC Corporation, EMC ControlCenter Family; see <http://www.emc.com/products/family/controlcenter-family.htm>.
7. Hewlett-Packard Development Company, HP Systems Insight Manager; see <http://h18000.www1.hp.com/products/servers/management/hpsim/index.html>.
8. L. Yin, S. Uttamchandani, M. Korupolu, K. Voruganti, and R. Katz, "SMART: An Integrated Multi-Action Advisor for Storage Systems," *Proceedings of the USENIX Annual Technical Conference*, Boston, MA, 2006, pp. 229–242.
9. S. Uttamchandani, L. Yin, G. A. Alvarez, J. Palmer, and G. Agha, "CHAMELEON: A Self-Evolving, Fully-Adaptive Resource Arbitrator for Storage Systems," *Proceedings of the USENIX Annual Technical Conference*, Anaheim, CA, 2005, pp. 75–88.
10. K. T. Pollack and S. M. Uttamchandani, "Genesis: A Scalable Self-Evolving Performance Management Framework for Storage Systems," *Proceedings of the 26th IEEE International Conference on Distributed Computing Systems*, Lisboa, Portugal, 2006, p. 33.
11. L. Yin, S. Uttamchandani, and R. Katz, "An Empirical Exploration of Black-Box Performance Models for Storage Systems," *Proceedings of the 14th IEEE International Symposium on Modeling, Analysis, and Simulation of Computer and Telecommunication Systems*, Monterey, CA, 2006, pp. 433–440.
12. L. Yin, S. Uttamchandani, J. Palmer, R. Katz, and G. Agha, "AutoLoop: Automated Action Selection in the 'Observe-Analyze-Act' Loop for Storage Systems," *Sixth International Workshop on Policies for Distributed Systems and Networks*, Stockholm, Sweden, 2005, pp. 129–138.
13. S. Uttamchandani, K. Voruganti, S. M. Srinivasan, J. Palmer, and D. Pease, "Polus: Growing Storage QoS Management Beyond a '4-Year Old Kid'," *Proceedings of the Third USENIX Conference on File and Storage Technologies*, San Francisco, CA, 2004, pp. 31–44.
14. J. Gray, "Why Do Computers Stop and What Can Be Done About it?" *Proceedings of the Fifth Symposium on Reliability in Distributed Software and Database Systems*, Los Angeles, CA, 1986, pp. 3–12.
15. S. Beattie, S. Arnold, C. Cowan, P. Wagle, C. Wright, and A. Shostack, "Timing the Application of Security Patches for Optimal Uptime," *Proceedings of the 16th Conference on Systems Administration*, Philadelphia, PA, 2002, pp. 101–110.
16. M. Lovelace, M. Defiebre, H. Gunatilaka, C. Neal, and Y. Xu, "TotalStorage Productivity Center V3.3 Update Guide," *IBM Redbooks*, April 23, 2008; see <http://www.redbooks.ibm.com/abstracts/sg247490.html>.
17. P. Sarkar, R. Routray, E. Butler, C.-H. Tan, K. Voruganti, and K. Yang, "SPIKE: Best Practice Generation for Storage Area Networks," *Proceedings of the Second USENIX Workshop on Tackling Computer Systems Problems with Machine Learning Techniques*, Cambridge, MA, 2007.
18. S. Gopisetty, E. Butler, S. Jaquet, M. Korupolu, T. K. Nayak, R. Routray, M. Seaman, A. Singh, C.-H. Tan, S. Uttamchandani, and A. Verma, "Automated Planners for Storage Provisioning and Disaster Recovery," *IBM J. Res. & Dev.* **52**, No. 4/5, XXX–XXX (2008, this issue).
19. A. Singh, M. Korupolu, and B. Bamba, "SPARK: Integrated Resource Allocation in Virtualization-Enabled SAN Data Centers," *Research Report RJ-10407*, IBM Almaden Research Center, San Jose, CA 95120, April 2007; see <http://www.aameeksingh.com/projects/spark-rj10407.pdf>.

20. J. H. Friedman, "Multivariate Adaptive Regression Splines," *Annals Statistics* **19**, No. 1, 1–67 (1991).
21. L. Breiman, J. Friedman, C. J. Stone, and R. A. Olshen, *Classification and Regression Trees*, CRC Press, Boca Raton, FL, 2003.
22. J. R. Quinlan, "Learning with Continuous Classes," *Proceedings of the Fifth Australian Joint Conference on Artificial Intelligence*, Hobart, Tasmania, 1992, pp. 343–348.
23. P. J. Brockwell and R. A. Davis, *Introduction to Time Series and Forecasting*, Second Edition, Springer Publishing, New York, 2002.
24. J. W. Cooley and J. W. Tukey, "An Algorithm for the Machine Calculation of Complex Fourier Series," *Math. Comput.* **19**, No. 90, 297–301 (1965).
25. A. Dieberger, E. Kandogan, and C. A. Kieliszewski, "Scalability in System Management GUIs: A Designer's Nightmare," *Proceedings of the Conference on Human Factors in Computing Systems*, Montreal, Quebec, Canada, 2006, pp. 99–104.
26. S. Agarwala, F. Alegre, K. Schwan, and J. Mehalingham, "E2EProf: Automated End-to-End Performance Management for Enterprise Systems," *Proceedings of the 37th Annual IEEE/IFIP International Conference on Dependable Systems and Networks*, Edinburgh, Scotland, 2007, pp. 749–758.
27. P. Barham, A. Donnelly, R. Isaacs, and R. Mortier, "Using Magpie for Request Extraction and Workload Modelling," *Proceedings of the Sixth USENIX Symposium on Operating System Design and Implementation*, San Francisco, CA, 2004, pp. 259–272.
28. M. Y. Chen, E. Kiciman, E. Fratkin, A. Fox, and E. Brewer, "Pinpoint: Problem Determination in Large, Dynamic Internet Services," *Proceedings of the International Conference on Dependable Systems and Networks*, Florence, Italy, 2002, pp. 595–604.
29. A. Brown, G. Kar, and A. Keller, "An Active Approach to Characterizing Dynamic Dependencies for Problem Determination in a Distributed Environment," *Proceedings of the Seventh IFIP/IEEE International Symposium on Integrated Network Management*, Seattle, WA, 2001, pp. 377–390.
30. V. Bahl, R. Chandra, A. Greenberg, S. Kandula, D. A. Maltz, and M. Zhang, "Towards Highly Reliable Enterprise Network Services Via Inference of Multi-Level Dependencies," *Proceedings of the Conference on Applications, Technologies, Architectures, and Protocols for Computer Communications*, Kyoto, Japan, 2007, pp. 13–24.
31. J. B. MacQueen, "Some Methods for Classification and Analysis of MultiVariate Observations," *Proceedings of the Fifth Berkeley Symposium on Mathematical Statistics and Probability*, Berkeley, CA, 1967, pp. 281–297.
32. A. P. Dempster, N. M. Laird, and D. B. Rubin, "Maximum Likelihood from Incomplete Data Via the EM Algorithm," *J. R. Stat. Soc. Series B (Methodological)* **39**, No. 1, 1977, 1–38 (1977).
33. CA, Inc., CA Storage Resource Manager; see <http://ca.com/us/products/product.aspx?ID=1541>.
34. Hewlett-Packard Development Company, HP Storage Essentials (SRM) Software; see <http://h18006.www1.hp.com/storage/software/srmtg/index.html>.
35. Symantec Corporation, Storage Management; see <http://www.symantec.com/business/products/category.jsp?pcid=2245>.
36. NetApp, Inc., NetApp Management Software: Storage Suite; see <http://www.netapp.com/us/products/management-software/>.
37. D. Russell and R. E. Passmore, "Magic Quadrant for Storage Resource Management and SAN Management Software, 2007," *Technical Report G00146578*, Gartner RAS Core Research, Gartner, March 2007.
38. B. B. Bederson, L. Stead, and J. D. Hollan, "Pad++: Advances in Multiscale Interfaces," *Proceedings of the Conference on Human Factors in Computing Systems*, Boston, MA, 1994, pp. 315–316.
39. ITIL: IT Infrastructure Library; see <http://www.itil-officialsite.com/home/home.asp>.
40. D. A. Menascé, V. A. F. Almeida, and L. W. Dowdy, *Capacity Planning and Performance Modeling: From Mainframes to Client-Server Systems*, Prentice-Hall, Inc., Upper Saddle River, NJ, 1994.
41. CA, Inc., CA SAN Designer; see <http://ca.com/us/products/product.aspx?ID=4590>.
42. G. A. Alvarez, E. Borowsky, S. Go, T. H. Romer, R. Becker-Szendy, R. Golding, A. Merchant, M. Spasojevic, A. Veitch, and J. Wilkes, "MINERVA: An Automated Resource Provisioning Tool for Large-Scale Storage Systems," *ACM Trans. Comput. Syst.* **19**, No. 4, 483–518 (2001).
43. E. Anderson, S. Spence, R. Swaminathan, M. Kallahalla, and Q. Wang, "Quickly Finding Near-Optimal Storage Designs," *ACM Trans. Comput. Syst.* **23**, No. 4, 337–374 (2005).
44. J. Ward, M. O'Sullivan, T. Shahoumian, and J. Wilkes, "Appia: Automatic Storage Area Network Fabric Design," *Proceedings of the Conference on File and Storage Technologies*, Monterey, CA, 2002, pp. 203–217.
45. J. Wolf, "The Placement Optimization Program: A Practical Solution to the Disk File Assignment Problem," *Proceedings of the 1989 ACM SIGMETRICS International Conference on Measurement and Modeling of Computer Systems*, Oakland, CA, 1989, pp. 1–10.
46. S. Agarwala, R. Routray, and S. Uttamchandani, "ChargeView: An Integrated Tool for Implementing Chargeback in IT Systems," *Proceedings of the 11th IEEE/IFIP Network Operations and Management Symposium*, Salvador, Bahia, Brazil, 2008, see <http://www.iit.edu/~routram/ChargeView.pdf>.
47. S. Uttamchandani, K. Voruganti, R. Routray, L. Yin, A. Singh, and B. Yolken, "BRAHMA: Planning Tool for Providing Storage Management as a Service," *Proceedings of the IEEE International Conference on Services Computing*, Salt Lake City, UT, 2007, pp. 1–10.
48. A. Singh, M. Korupolu, and K. Voruganti, "Zodiac: Efficient Impact Analysis for Storage Area Networks," *Proceedings of the Fourth USENIX Conference on File and Storage Technologies*, San Francisco, CA, 2005, pp. 73–86.

*Received October 1, 2007; accepted for publication December 19, 2007; Internet publication June 18, 2008*

**Sandeep Gopisetty** *IBM Almaden Research Center, 650 Harry Road, San Jose, California 95120 (sandeep@almaden.ibm.com)*. Mr. Gopisetty is a Senior Technical Staff Member and manager. He leads the autonomic storage management research, where he is responsible for the strategy, vision, and architecture of the TPC and its analytics. He is currently working on various optimization and resiliency analytics for autonomic storage resource manager and integrated systems management. He is the recipient of several patents and IBM corporate recognition awards including an Outstanding Innovation Award and a Supplemental Outstanding Technical Achievement Award for his vision and technical contributions to the architecture of the TPC as well as leadership in driving his vision into plan and through implementation with a team that spanned three divisions. He also received an Outstanding Technical Achievement Award and a Supplemental Outstanding Technical Achievement Award, both for character recognition. His research interests include object-oriented systems, Sun Java\*\*, C and C++ programming, and distributed database systems development. He graduated with an M.S. degree in computer engineering from Santa Clara University.

**Sandip Agarwala** *IBM Almaden Research Center, 650 Harry Road, San Jose, California 95120 (sagarwala@us.ibm.com)*. Dr. Agarwala is a Research Staff Member. He holds a Ph.D. degree in computer science from the Georgia Institute of Technology, and a B.Tech. degree in computer science from the Indian Institute of Technology, Kharagpur. His research interests are in the general area of experimental computer systems, with primary focus on the design, development, and analysis of system- and middleware-level techniques to diagnose performance, manage resources, and automate the management of large-scale distributed systems.

**Eric Butler** *IBM Almaden Research Center, 650 Harry Road, San Jose, California 95120*. Mr. Butler is an Advisory Software Engineer. He holds B.S. and M.S. degrees in electrical engineering from San Jose State University. His research interests include data center optimization; integrated system, storage, and network management; and storage systems.

**Divyesh Jadav** *IBM Almaden Research Center, 650 Harry Road, San Jose, California 95120 (divyesh@almaden.ibm.com)*. Dr. Jadav is a Software Architect in the Storage Systems and Servers group. He holds a B.E. degree from Bombay University, India, and M.S. and Ph.D. degrees from Syracuse University, all in computer engineering. He has worked in the areas of RAID (Redundant Array of Independent Disks) software, autonomic performance control, and storage resource management.

**Stefan Jaquet** *IBM Almaden Research Center, 650 Harry Road, San Jose, California 95120*. Mr. Jaquet is a Senior Software Engineer. He holds a B.S. degree in mathematics and computer science from Santa Clara University, and an M.S. degree in computer science from San Jose State University. He has worked on various data management, storage systems, and storage management projects, and he is currently focused on integrated storage and systems management as well as storage performance management software.

**Madhukar Korupolu** *IBM Almaden Research Center, 650 Harry Road, San Jose, California 95120 (madhukar@us.ibm.com)*. Dr. Korupolu is a Research Staff

Member. He holds M.S. and Ph.D. degrees in computer science from the University of Texas at Austin, and a B.Tech. degree in computer science from the Indian Institute of Technology, Madras. His areas of interest and contribution are in capacity planning and provisioning (technology released as part of IBM TotalStorage Productivity Center), autonomic resource management and related server and storage optimization in data centers, virtualization management, and more generally, algorithms and distributed systems. He is presently an Associate Editor for the ACM journal *Transactions on Storage*.

**Ramani Routray** *IBM Almaden Research Center, 650 Harry Road, San Jose, California 95120 (routray@us.ibm.com)*. Mr. Routray is an Advisory Software Engineer. He holds an M.S. degree in computer science from Illinois Institute of Technology. His research interests include storage systems, SAN simulation, integrated systems management, machine learning, and disaster recovery.

**Prasenjit Sarkar** *IBM Almaden Research Center, 650 Harry Road, San Jose, California 95120*. Dr. Sarkar is a Research Staff Member in computer science and Master Inventor whose focus is on autonomic data storage resource management. He has made key architectural contributions in the areas of self-management, optimization, fault analysis, storage provisioning, and orchestration that are featured in the IBM TotalStorage Productivity Center suite of products. He holds a B.S. degree in computer science and engineering from the Indian Institute of Technology, Kharagpur, and M.S. and Ph.D. degrees in computer science, both from the University of Arizona. His initial research at IBM focused on the then-emerging field of storage networking over IP networks. In addition to authoring Internet Engineering Task Force (IETF) industry standards, he was instrumental in designing and releasing the industry's first iSCSI (Internet Small Computer System Interface) storage controller in June 2001. He has received five patents and three IBM Outstanding Technical Achievement Awards.

**Aameek Singh** *IBM Almaden Research Center, 650 Harry Road, San Jose, California 95120 (aameek.singh@us.ibm.com)*. Dr. Singh holds a Ph.D. degree in computer science from the Georgia Institute of Technology. His research interests include integrated management and security for enterprise-scale storage and distributed systems.

**Miriam Sivan-Zimet** *IBM Almaden Research Center, 650 Harry Road, San Jose, California 95120*. Ms. Sivan-Zimet is an Advisory Software Engineer and holds an M.S. degree in computer science from the University of California at Santa Cruz.

**Chung-Hao Tan** *IBM Almaden Research Center, 650 Harry Road, San Jose, California 95120 (chungtan@us.ibm.com)*. Mr. Tan is a Senior Software Engineer. He holds an M.S. degree in computer science from the University of Southern California. His research interests include HCI, system management, and machine learning.

**Sandeep Uttamchandani** *IBM Almaden Research Center, 650 Harry Road, San Jose, California 95120 (sandeepu@us.ibm.com)*. Dr. Uttamchandani holds M.S. and Ph.D. degrees from University of Illinois, Urbana-Champaign. He

currently leads the research effort in developing and delivering a resiliency planner for the IBM systems management product line. He has been involved in projects relating to storage protocols, distributed file systems, autonomic storage management, and large-scale customer deployments. He started and developed the SMART project at IBM Almaden Research Center, which explored model-based techniques for storage management. He has authored several papers in key systems conferences and key patent disclosures in the systems management domain.

**David Merbach** *IBM Systems and Technology Group, 3605 Highway 52 North, Rochester, Minnesota 55901 (dmerbach@us.ibm.com)*. Mr. Merbach is an architect for the TotalStorage Productivity Center.

**Sumant Padbidri** *IBM Almaden Research Center, 650 Harry Road, San Jose, California 95120 (spadbidr@us.ibm.com)*. Mr. Padbidri is a Senior Technical Staff Member and lead architect for the TotalStorage Productivity Center at IBM. He holds an M.S. degree in computer science from the University of Bombay.

**Andreas Dieberger** *IBM Almaden Research Center, 650 Harry Road, San Jose, California 95120*. Dr. Dieberger is a Research Staff Member working on HCI.

**Eben M. Haber** *IBM Almaden Research Center, 650 Harry Road, San Jose, California 95120*. Dr. Haber is a Research Staff Member working on HCI. He holds a Ph.D. degree from the University of Wisconsin–Madison where he worked on improving user interfaces for database systems. His interests include databases, user interfaces, and visualization of structured information. He has worked on data mining and visualization as well as user interface design, and he is currently studying human interactions with complex systems.

**Eser Kandogan** *IBM Almaden Research Center, 650 Harry Road, San Jose, California 95120*. Dr. Kandogan is a Research Staff Member. He holds a Ph.D. degree from the University of Maryland, where he studied computer science with a specialization in HCI. His current interests include human interaction with complex systems, policy-based system management, ethnographic studies of system administrators, information visualization, and end-user programming.

**Cheryl A. Kieliszewski** *IBM Almaden Research Center, 650 Harry Road, San Jose, California 95120 (cher@us.ibm.com)*. Dr. Kieliszewski is a Research Scientist focused on the human element of service system design. She has worked in human factors and has a background in general design and HCI. She holds a Ph.D. degree in industrial and systems engineering from the Virginia Polytechnic Institute.

**Dakshi Agrawal** *IBM Research Division, Thomas J. Watson Research Center, 19 Skyline Drive, Hawthorne, New York 10532 (agrawal@us.ibm.com)*. Dr. Agrawal received a B.Tech. degree from the Indian Institute of Technology–Kanpur, an M.S. degree from Washington University, and a Ph.D. degree from the University of Illinois, Urbana–Champaign, all in electrical engineering. He manages the Network Management Research group.

**Murthy Devarakonda** *IBM Research Division, Thomas J. Watson Research Center, P.O. Box 218, Yorktown Heights, New York 10598*. Dr. Devarakonda is a Senior Manager and Research Staff Member in the Services Research department at the IBM T. J. Watson Research Center. He received his Ph.D. degree in computer science from the University of Illinois at Urbana–Champaign in 1988. Presently, his research is focused on distributed file systems, Web technologies, storage and systems management, and now services computing. He received three IBM Research Division Awards for his work on distributed file systems and Global Technology Outlook development. Dr. Devarakonda is a Senior Member of the IEEE and the ACM.

**Kang-Won Lee** *IBM Research Division, Thomas J. Watson Research Center, 19 Skyline Drive, Hawthorne, New York 10532*. Dr. Lee is a Research Staff Member and a manager of the Wireless Network Research group. He holds a Ph.D. degree in computer science from the University of Illinois, Urbana–Champaign, and B.S. and M.S. degrees in computer engineering from the Seoul National University. His research interest lies in distributed computing systems, wired and wireless computer networks, and on-demand policy-based computer system management. He received an IBM Research Division Award for his contribution in policy-based autonomic computing systems.

**Kostas Magoutis** *IBM Research Division, Thomas J. Watson Research Center, P.O. Box 218, Yorktown Heights, New York 10598 (magoutis@us.ibm.com)*. Dr. Magoutis is a Research Staff Member in the Services Research department. His research interests are in distributed systems, storage systems, and IT services. Recently, he has been working on modeling and management of distributed middleware systems, self-regulating, high-speed access to network storage systems, and improving the design and delivery of IT services. He holds a Ph.D. degree in computer science from Harvard University.

**Dinesh C. Verma** *IBM Research Division, Thomas J. Watson Research Center, 19 Skyline Drive, Hawthorne, New York 10532 (dverma@us.ibm.com)*. Dr. Verma is a researcher and senior manager in the networking technology area. He holds a Ph.D. degree in computer networking from the University of California Berkeley, a Masters in Management of Technology degree from Polytechnic University, and a B.S. degree in computer science from the Indian Institute of Technology, Kanpur. He holds 24 patents related to computer networks and has authored more than 50 papers and four books in the field. He is the program manager for the U.S. and UK International Technology Alliance in Network Sciences. He is a Fellow of the IEEE and has served in various program committees and technical committees. His research interests include topics in wireless networks, network management, distributed computing, and autonomic systems.

**Norbert G. Vogl** *IBM Research Division, Thomas J. Watson Research Center, P.O. Box 218, Yorktown Heights, New York 10598 (vogl@us.ibm.com)*. Mr. Vogl holds degrees in mathematics and computer science from Clarkson University and Pennsylvania State University. He develops service and application prototypes, and his experience includes decision support for storage allocation, IT in the small and medium business sector, bulk file delivery via satellite communication systems, video and data transmission over residential broadband, and workflows of intraenterprise electronic commerce.